

## CONTENTS

Title	Page
Preface.....	5
Resident population on 01.01.2009 .....	6
General data .....	7
Population by age at the beginning of 2009.....	8
Trends in demographics indicators .....	9
Resident population by age and gender at 01.01.2009. ....	10
Natality, mortality and natural increase per 1000 population.....	11
Life expectancy at birth in EU member states .....	12
Life expectancy at 45 years of age in EU member states .....	13
Deaths by cause per 100,000 population in 2008 .....	14
Main causes of death in 2008.....	15
Age-standardised death rates .....	16
Infant mortality .....	19
Structure of infant mortality (%) in 2008 .....	20
Infant mortality by cause per 10,000 live births in 2008 .....	21
Perinatal, neonatal and maternal mortality in 2008 .....	21
Birth rates by age of mother in 2008 .....	22
Abortions in 2008 .....	23
Health facilities in 2008.....	24
Physicians by speciality at the end of 2008 .....	25
Hospital beds by speciality at the end of 2008 .....	26
Selected notifiable diseases.....	27
Malignant neoplasms .....	28
Tuberculosis.....	29
Incidence of syphilis and gonorrhoea .....	30
Hospital beds use by speciality in 2008.....	31
Average length of stay (days) in the Baltic and Nordic countries .....	32
Discharges by groups of diseases in 2008 .....	33
Surgical operations in the hospitals in 2008 .....	34
Total health care expenditure as % of GDP in EU member states .....	35
Obstetric definitions.....	36
Sources.....	37
Further information.....	38

### Preface

“Health in the Baltic Countries 2008” is the seventeenth edition of the series and is aimed at providing a basis for the comparison of health statistics of the three Baltic States – namely Estonia, Latvia and Lithuania.

The publication is targeted at health professionals, policy and opinion formers, those involved in research, students of health and any of the general public interested in the health of their fellow citizens.

The report seeks to establish significant similarities and differences in health in the three countries across a wide range of areas, including:

- the information regarding the countries;
- the demographics;
- total and infant mortality rates;
- abortion rates;
- the extent of some specific diseases;
- health care resources and their use;
- health care expenditure.

In the same way that trends in health change so does the organisation of its management. Consequently, the Centre of Health Economics was established in Latvia in 2009 as a result of the reorganisation of the health system. The Centre is now responsible for those functions formerly administrated by the Health Statistics and Medical Technologies State Agency. Similarly, in Lithuania, the Health Information Centre has now become part of the Institute of Hygiene. The National Institute for Health Development of Estonia has similar responsibilities in that country from 2008. This report is issued jointly between these three national organisations.

The demographic statistics – that is the breakdown of population by residence, gender and age – are similar across the three individual countries. The general trends are that birth rates are increasing while the rate of mortality has decreased. However, the population structure by working age varies in each of the countries; this could be explained by the possibly different definitions of working age. The natural decrease has become less in the last years.

The Baltic States show the lowest average life expectancy of males compared to other EU member states. The average life expectancy for females was also much lower in the Baltic States than in most EU countries. The most common causes of deaths are diseases of the circulatory system, neoplasms, injury, poisoning and certain other external causes in the Baltic States.

The rates of infant mortality have decreased in all Baltic countries during the last thirteen years. The most common causes of infant mortality were certain conditions originating in the perinatal period and congenital malformations.

Estonia recorded higher birth-related rates – birth rate per 1000 population, birth rate per 1000 women aged 15-49 and total fertility rate – compared to Latvia and Lithuania. Lithuania recorded the lowest rate of abortions per 1000 births in comparison to the other Baltic States.

The rates for health care resources differ considerably in Estonia, Latvia and Lithuania. Health care resources include medical staff, the number and use of hospital beds, hospital discharges and inpatient surgical operations in this publication. It is possible that these differences can be explained by coding and practice issues, the different methods of organising and the structure of healthcare system in each country. Therefore this

data has to be viewed within the nature of the healthcare system in each country and cannot be analysed separately.

The rates of infectious diseases are quite different in the individual Baltic countries. They also vary year by year. These indicators mainly depend on the individual epidemiologic situation within each country. For example, a significant outbreak of acute viral hepatitis A occurred in Latvia and a high incidence rate of whooping cough was registered in Estonia in 2008. In parallel to these events Lithuania reported the highest morbidity rates from tuberculosis. The spread of malignant neoplasms shows an upward trend in all Baltic countries. However, the incidence of certain infectious diseases – tuberculosis, syphilis, gonorrhoea – decreased. The spread of these infectious diseases have a relationship with the socio-economic situation in the country.

Finally, the Baltic States reported the lowest percentage of health expenditure as a percentage of Gross Domestic Product compared to most other EU states.

The most important sources of data for this publication were the annual statistical reports of the various medical institutions as well as health databases and registries. Some data was taken from official publications and the web pages of the national statistics offices of the Baltic States. *The Health for All database* of the World Health Organisation and NOMESCO publication entitled *Health Statistics in the Nordic Countries 2007* were used as sources of information for tables containing data from other European countries.

**Resident population on 01.01.2009.**

	<b>Estonia</b>	<b>Latvia</b>	<b>Lithuania</b>
<b>Population (thousand)</b>	1340.4	2261.3	3349.9
<b>Per 1 km<sup>2</sup></b>	31.0	35.0	51.3
<b>Urban (thousand)</b>	930.8	1532.7	2240.5
<b>%</b>	69.4	67.8	66.9
<b>Rural (thousand)</b>	409.6	728.6	1109.4
<b>%</b>	30.6	32.2	33.1
<b>Males (thousand)</b>	617.3	1043.1	1559.3
<b>%</b>	46.1	46.1	46.5
<b>Females (thousand)</b>	723.1	1218.2	1790.6
<b>%</b>	53.9	53.9	53.5
<b>Below working age (%)</b>	16.0	13.7	16.4
<b>Working age (%)</b>	64.2	66.2	64.3
<b>Above working age (%)</b>	19.7	20.1	19.3
<b>Working age</b>			
<b>Males</b>	16-63	15-61	16-62 y 6 m
<b>Females</b>	16-60	15-61	16-60

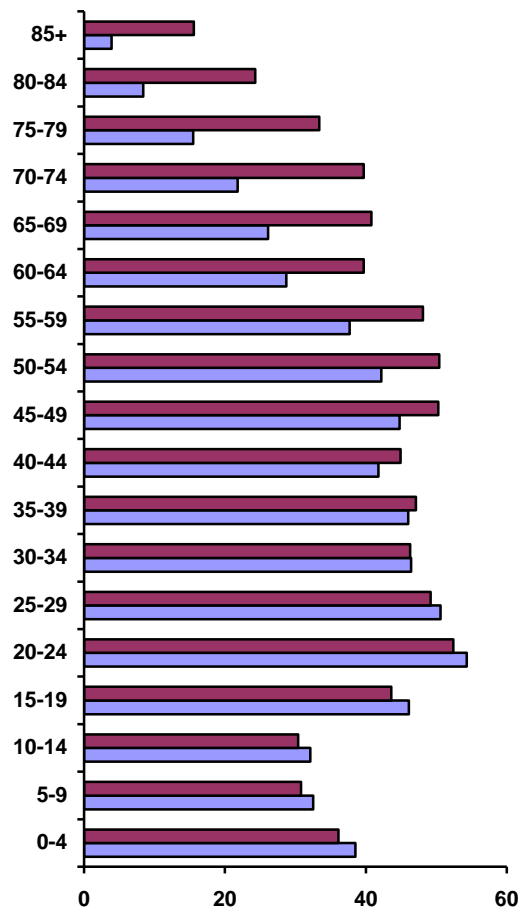
## Health in the Baltic countries

### General data

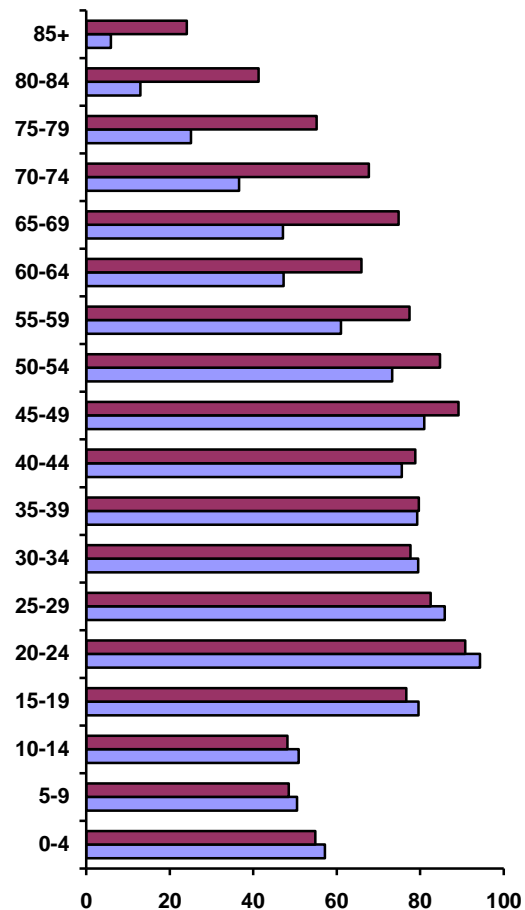
	<b>Estonia</b>	<b>Latvia</b>	<b>Lithuania</b>
Official name of the state	Republic of Estonia (Eesti Vabariik)	Republic of Latvia (Latvijas Republika)	Republic of Lithuania (Lietuvos Respublika)
Independence Day	24 February (1918)	18 November (1918)	16 February (1918)
Governing body of the state	Parliament (Riigikogu), 101 members, elected for a period of 4 years	Parliament (Saeima), 100 members, elected for a period of 4 years	Parliament (Seimas), 141 members, elected for a period of 4 years
Governmental structure	Republic, the President is elected for the period of 5 years	Republic, the President is elected for the period of 4 years	Republic, the President is elected for the period of 5 years
Area (thousand km <sup>2</sup> )	45.2	64.6	65.3
Major islands	Saaremaa, 2671 km <sup>2</sup> Hiiumaa, 989 km <sup>2</sup> Muhu, 198 km <sup>2</sup>	-	-
Major rivers	Võhandu, 162 km (through lake Tamula) Pärnu, 144 km Põltsamaa, 135 km	Daugava, 1005 km Gauja, 452 km Venta, 346 km	Nemunas, 937.4 km Neris, 509.5 km Venta, 346 km
Major lakes	Peipsi, 3555 km <sup>2</sup> (in Estonia 1529 km <sup>2</sup> ) Võrtsjärv, 271 km <sup>2</sup> Narva veehoidla (artificial lake) 191 km <sup>2</sup> (in Estonia 38 km <sup>2</sup> )	Lubāns, 80.7 km <sup>2</sup> Rāzna, 57.6 km <sup>2</sup> Engure, 40.5 km <sup>2</sup>	Drūkšiai, 44.8 km <sup>2</sup> Dysnai, 24.4 km <sup>2</sup> Dusia, 23.3 km <sup>2</sup>
The highest point	Suur Munamägi, 318 m	Gaiziņkalns, 311.6 m	Juozapinė, 293.6 m
Average daily temperature in 2008	+ 7.4 °C	+ 8.0 °C	+ 8.3 °C
Average daily temperature in January 2008	- 0.4 °C	- 0.6 °C	+ 0.9 °C
Average daily temperature in July 2008	+ 16.8 °C	+ 17.1 °C	+ 15.7 °C
Administrative units at the beginning of 2009	15 counties, 33 cities, 14 cities without municipal status, 194 rural municipalities	38 counties, 77 cities and towns, 428 rural municipalities	10 counties, 103 cities and towns, 60 rural municipalities
Capital, resident population (thousand) at the beginning of 2009	Tallinn 398.6	Riga 713.1	Vilnius 558.2
State language	Estonian	Latvian	Lithuanian
Currency	Estonian kroon=100 sents 1 EEK = 0.064 EUR	Latvian lats=100 santims 1 LVL = 1.423 EUR	Lithuanian lits=100 centas 1 LTL = 0.28962 EUR

Population by age at the beginning of 2009  
(thousand)

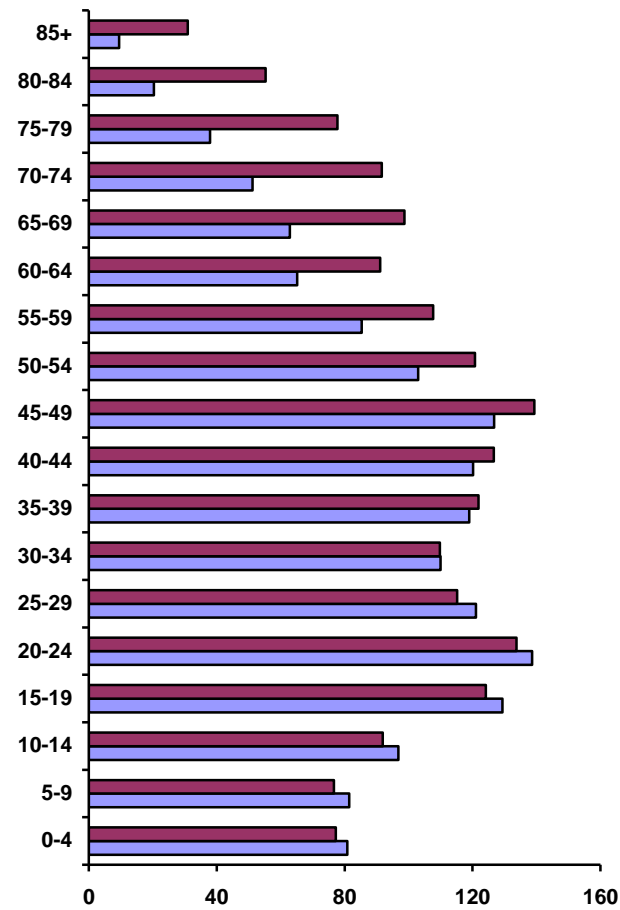
Estonia



Latvia



Lithuania



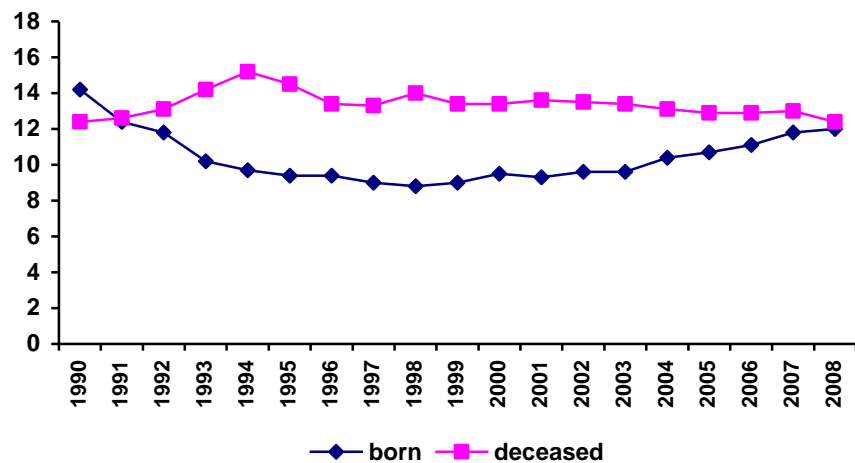
Male Female

# Health in the Baltic countries

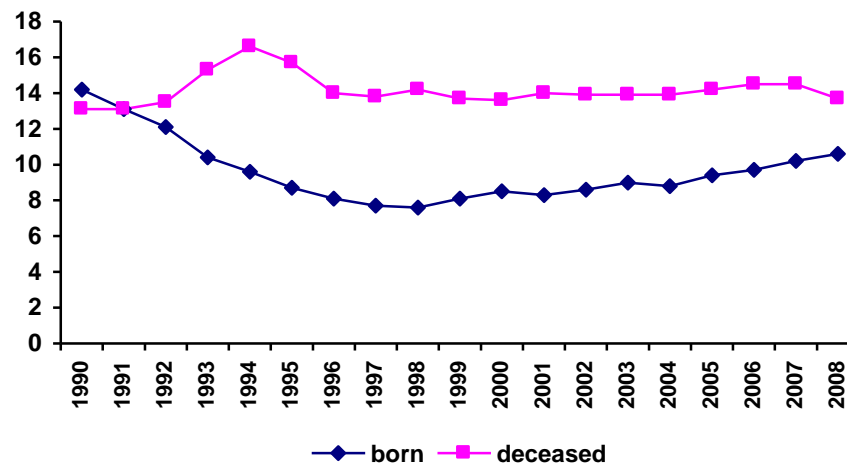
## Trends in demographics indicators

Per 1000 population

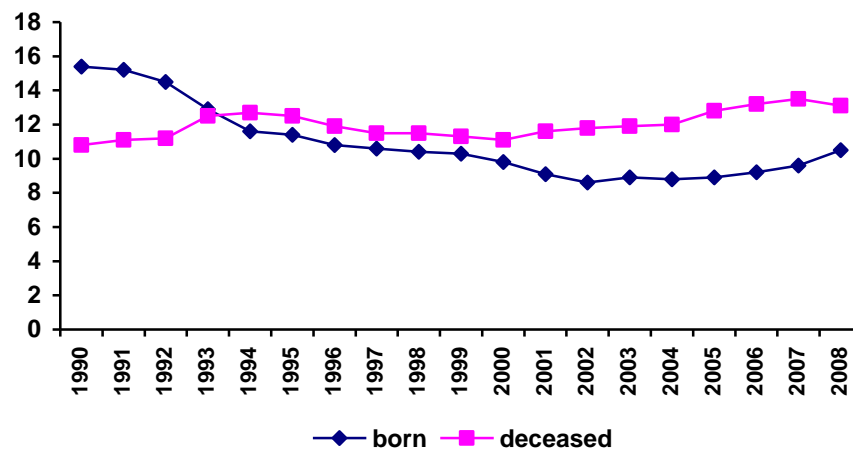
### Estonia



### Latvia



### Lithuania



## Health in the Baltic countries

### Resident population by age and gender at 01.01.2009.

	Estonia						Latvia						Lithuania					
	Total		Males		Females		Total		Males		Females		Total		Males		Females	
	Number	%	Number	%	Number	%	Number	%	Number	%	Number	%	Number	%	Number	%	Number	%
Total	1340415	100.0	617299	100.0	723116	100.0	2261294	100.0	1043120	100.0	1218174	100.0	3349872	100.0	1559247	100.0	1790625	100.0
0-4	74598	5.6	38536	6.2	36062	5.0	112130	5.0	57249	5.5	54881	4.5	158112	4.7	80815	5.2	77297	4.3
5-9	63254	4.7	32452	5.3	30802	4.3	99034	4.4	50549	4.8	48485	4.0	158119	4.7	81378	5.2	76741	4.3
10-14	62512	4.7	32070	5.2	30442	4.2	99147	4.4	50943	4.9	48204	4.0	188707	5.6	96769	6.2	91938	5.1
15-19	89623	6.7	46057	7.5	43566	6.0	156251	6.9	79556	7.6	76695	6.3	253555	7.6	129390	8.3	124165	6.9
20-24	106649	8.0	54260	8.8	52389	7.2	185078	8.2	94271	9.0	90807	7.5	272269	8.1	138567	8.9	133702	7.5
25-29	99832	7.4	50640	8.2	49192	6.8	168386	7.4	85873	8.2	82513	6.8	236253	7.1	121070	7.8	115183	6.4
30-34	92658	6.9	46384	7.5	46274	6.4	157172	7.0	79461	7.6	77711	6.4	219786	6.6	109976	7.1	109810	6.1
35-39	93107	6.9	45990	7.5	47117	6.5	158969	7.0	79300	7.6	79669	6.5	240922	7.2	119014	7.6	121908	6.8
40-44	86703	6.5	41764	6.8	44939	6.2	154436	6.8	75618	7.2	78818	6.5	246850	7.4	120150	7.7	126700	7.1
45-49	95050	7.1	44798	7.3	50252	6.9	170186	7.5	81021	7.8	89165	7.3	266014	7.9	126763	8.1	139251	7.8
50-54	92548	6.9	42168	6.8	50380	7.0	158019	7.0	73313	7.0	84706	7.0	223756	6.7	102999	6.6	120757	6.7
55-59	85855	6.4	37722	6.1	48133	6.7	138409	6.1	61034	5.9	77375	6.4	192974	5.8	85302	5.5	107672	6.0
60-64	68444	5.1	28697	4.6	39747	5.5	113223	5.0	47276	4.5	65947	5.4	156326	4.7	65227	4.2	91099	5.1
65-69	66862	5.0	26053	4.2	40809	5.6	121952	5.4	47115	4.5	74837	6.1	161651	4.8	62910	4.0	98741	5.5
70-74	61517	4.6	21807	3.5	39710	5.5	104327	4.6	36587	3.5	67740	5.6	142750	4.3	51165	3.3	91585	5.1
75-79	48854	3.6	15491	2.5	33363	4.6	80266	3.5	25056	2.4	55210	4.5	115723	3.5	37902	2.4	77821	4.3
80-84	32747	2.4	8445	1.4	24302	3.4	54 300	2.4	13 004	1.2	41 296	3.4	75670	2.3	20353	1.3	55317	3.1
85+	19457	1.5	3904	0.6	15553	2.2	30 009	1.3	5 894	0.6	24 115	2.0	40435	1.2	9497	0.6	30938	1.7
Unknown	145	0.0	61	0.0	84	0.0	-	-	-	-	-	-	-	-	-	-	-	-

## Health in the Baltic countries

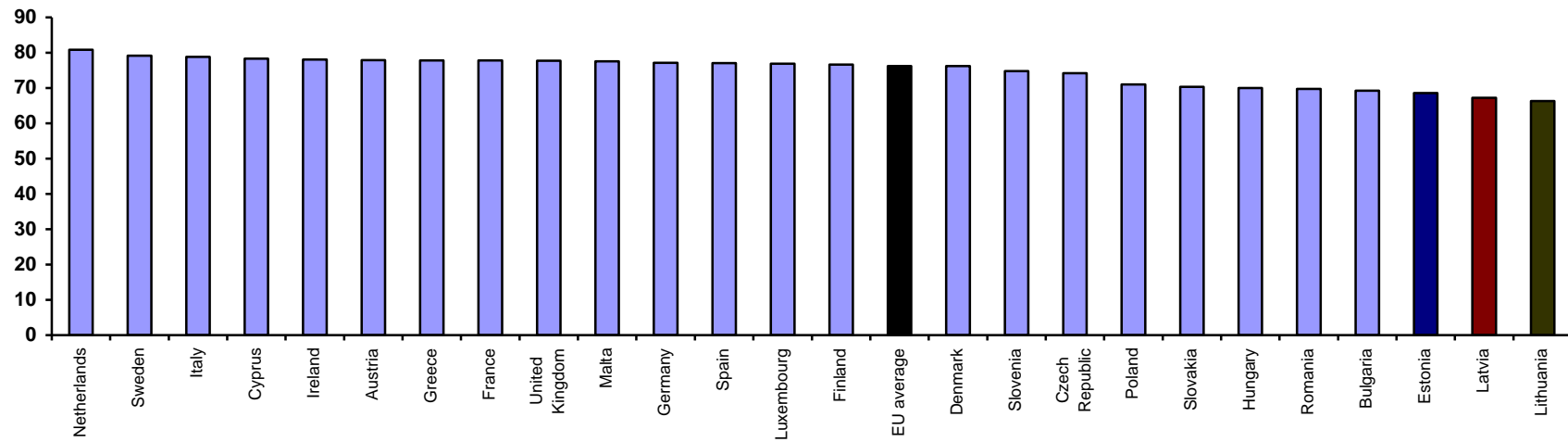
### Nativity, mortality and natural increase per 1000 population

Years	Estonia			Latvia			Lithuania		
	Nativity	Mortality	Natural increase	Nativity	Mortality	Natural increase	Nativity	Mortality	Natural increase
1960	16.6	10.5	6.1	16.7	10.0	6.7	22.5	7.8	14.7
1965	14.8	10.6	4.2	13.8	10.1	3.7	18.1	7.9	10.2
1970	16.0	11.2	4.8	14.6	11.3	3.3	17.7	8.9	8.8
1975	15.0	11.6	3.4	14.2	12.2	2.0	15.7	9.5	6.2
1980	14.9	12.4	2.5	14.1	12.8	1.3	15.2	10.5	4.7
1985	15.5	12.6	2.9	15.4	13.2	2.2	16.5	11.1	5.4
1990	14.2	12.4	1.8	14.2	13.1	1.1	15.4	10.8	4.6
1991	12.4	12.6	-0.2	13.1	13.1	0.0	15.2	11.1	4.1
1992	11.8	13.1	-1.3	12.1	13.5	-1.4	14.5	11.2	3.3
1993	10.2	14.2	-4.0	10.4	15.3	-4.9	12.9	12.5	0.4
1994	9.7	15.2	-5.5	9.6	16.6	-7.0	11.6	12.7	-1.1
1995	9.4	14.5	-5.1	8.7	15.7	-7.0	11.4	12.5	-1.1
1996	9.4	13.4	-4.0	8.1	14.0	-5.9	10.8	11.9	-1.1
1997	9.0	13.3	-4.3	7.7	13.8	-6.1	10.6	11.5	-0.9
1998	8.8	14.0	-5.2	7.6	14.2	-6.6	10.4	11.5	-1.1
1999	9.0	13.4	-4.4	8.1	13.7	-5.6	10.3	11.3	-1.0
2000	9.5	13.4	-3.9	8.5	13.6	-5.1	9.8	11.1	-1.3
2001	9.3	13.6	-4.3	8.3	14.0	-5.7	9.1	11.6	-2.5
2002	9.6	13.5	-3.9	8.6	13.9	-5.3	8.6	11.8	-3.2
2003	9.6	13.4	-3.8	9.0	13.9	-4.9	8.9	11.9	-3.0
2004	10.4	13.1	-2.7	8.8	13.9	-5.1	8.8	12.0	-3.2
2005	10.7	12.9	-2.2	9.4	14.2	-4.8	8.9	12.8	-3.9
2006	11.1	12.9	-1.8	9.7	14.5	-4.7	9.2	13.2	-4.0
2007	11.8	13.0	-1.2	10.2	14.5	-4.3	9.6	13.5	-3.9
2008	12.0	12.4	-0.4	10.6	13.7	-3.1	10.5	13.1	-2.6

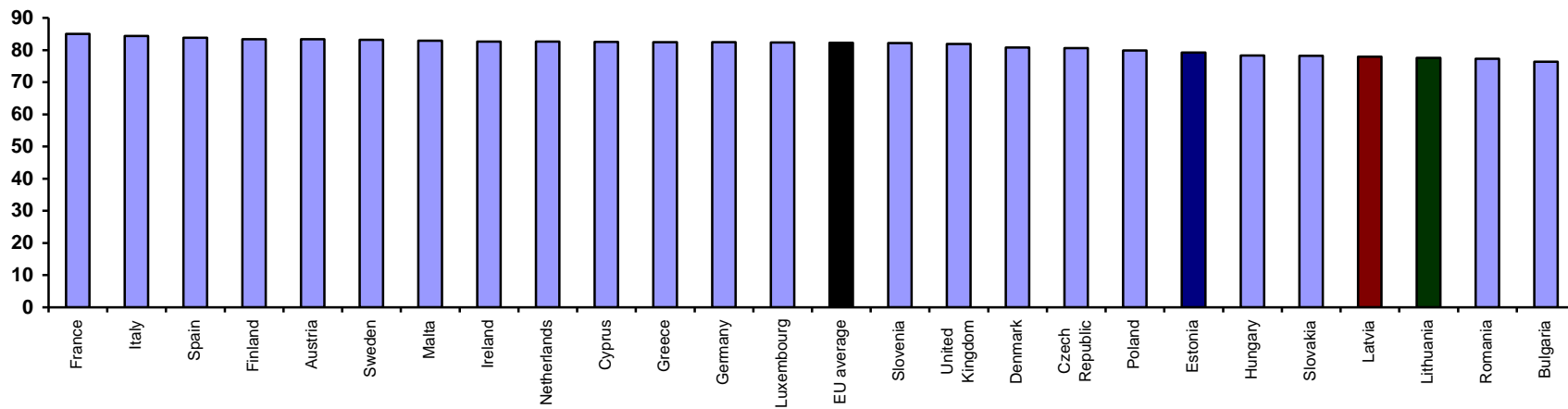


Life expectancy at birth in EU member states \*

males



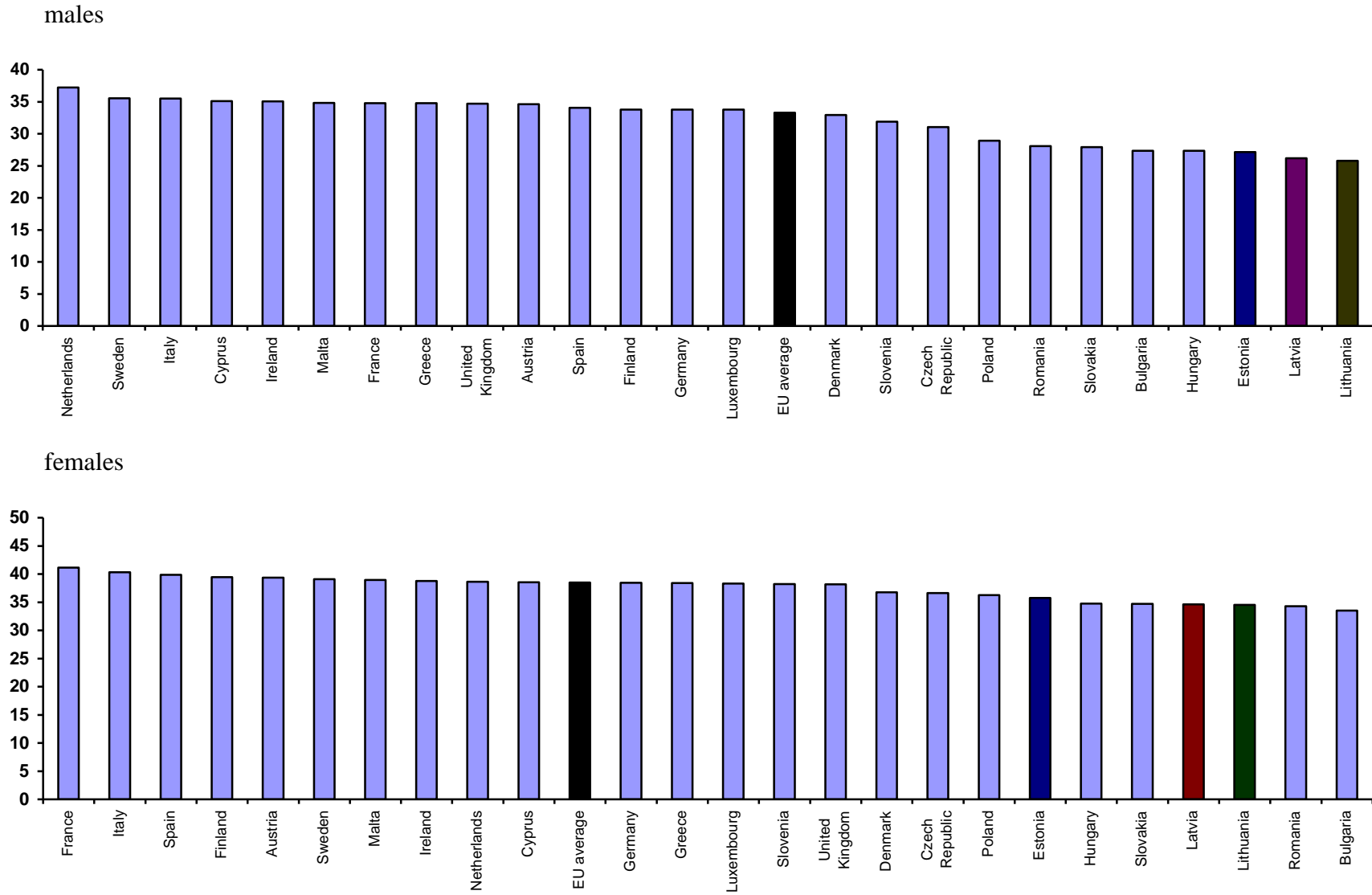
females



\* Data for Estonia, Latvia and Lithuania – 2008; other countries 2005-2008

## Health in the Baltic countries

### Life expectancy at 45 years of age in EU member states \*



\* Data for Estonia, Latvia and Lithuania – 2008; other countries 2005-2008

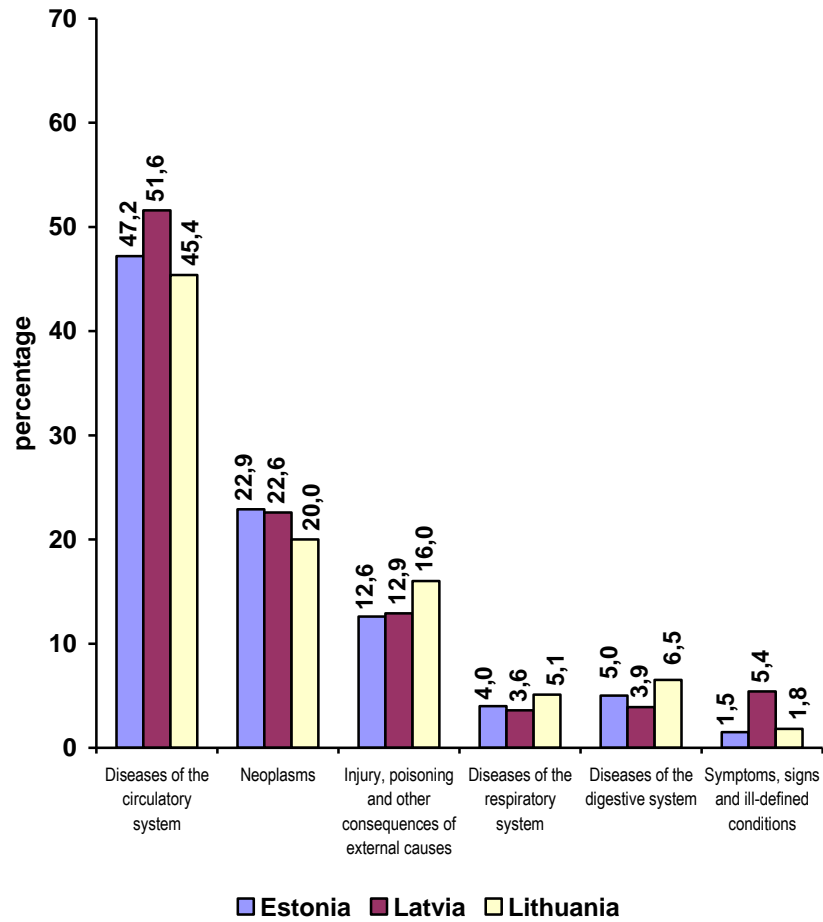
## Health in the Baltic countries

### Deaths by cause per 100,000 population in 2008

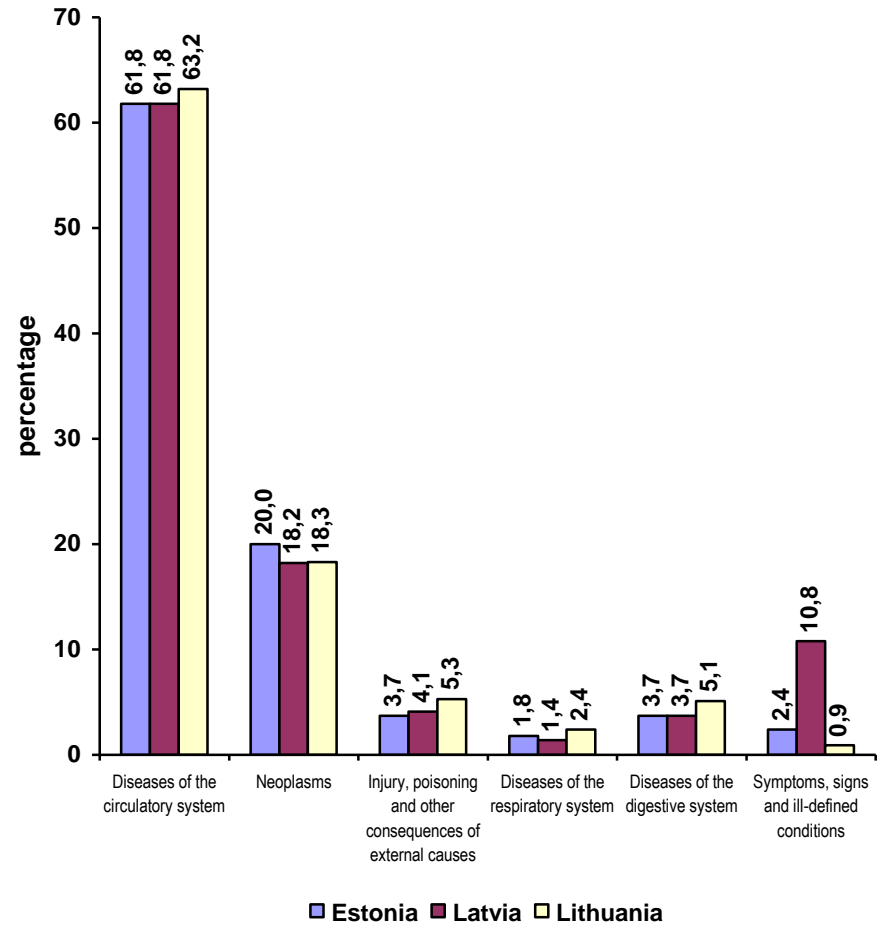
Causes of death	Estonia			Latvia			Lithuania		
	Total	Males	Females	Total	Males	Females	Total	Males	Females
Certain infectious and parasitic diseases	9.1	14.1	4.8	12.6	16.7	9.2	16.1	23.7	9.5
Neoplasms	267.4	312.1	229.2	261.7	313.1	217.7	250.1	293.2	212.6
Diseases of the blood and blood-forming organs and certain disorders involving the immune mechanisms	19.5	0.8	1.2	1.5	1.1	1.7	0.7	0.5	0.8
Endocrine, nutritional and metabolic diseases	1.0	15.1	23.4	19.6	14.9	23.7	9.4	8.5	10.2
Mental and behavioural disorders	14.3	21.4	8.3	9.0	10.6	7.7	2.9	4.0	2.0
Diseases of the nervous system and sensory organs	17.3	19.4	15.5	14.6	19.1	11.0	18.1	20.6	16.0
Diseases of the circulatory system	676.8	642.1	706.5	728.8	714.9	740.7	703.5	665.9	736.2
Diseases of the respiratory system	36.5	54.4	21.2	32.0	50.0	16.5	50.1	75.0	28.5
Diseases of the digestive system	54.1	68.2	42.0	49.0	54.3	44.5	75.8	95.1	58.9
Diseases of the skin and subcutaneous tissue	1.1	1.3	1.0	1.5	1.5	1.4	1.4	1.2	1.5
Diseases of the musculoskeletal system and connective tissue	5.1	3.2	6.6	3.2	3.2	3.3	2.1	1.6	2.6
Diseases of the genitourinary system	10.1	11.0	9.4	15.3	16.5	14.2	9.0	9.1	8.9
Pregnancy, childbirth and puerperium	-	-	0.0	-	-	0.2	-	-	0.2
Certain conditions originating in perinatal period	2.4	2.9	1.9	3.5	4.7	2.5	2.1	2.4	1.8
Congenital malformations, deformations and chromosomal abnormalities	3.2	3.9	2.6	4.1	4.8	3.6	3.4	3.6	3.2
Symptoms, signs and abnormal clinical and laboratory findings, not elsewhere classified	24.3	20.1	27.9	104.5	75.1	129.6	17.9	26.7	10.3
Injury, poisoning and certain other consequences of external causes	101.3	171.1	41.8	108.2	177.9	48.6	142.5	235.0	61.9
<b>TOTAL</b>	<b>1243.8</b>	<b>1361.1</b>	<b>1143.6</b>	<b>1369.4</b>	<b>1478.4</b>	<b>1276.1</b>	<b>1305.3</b>	<b>1466.2</b>	<b>1165.1</b>

Main causes of death in 2008

Males

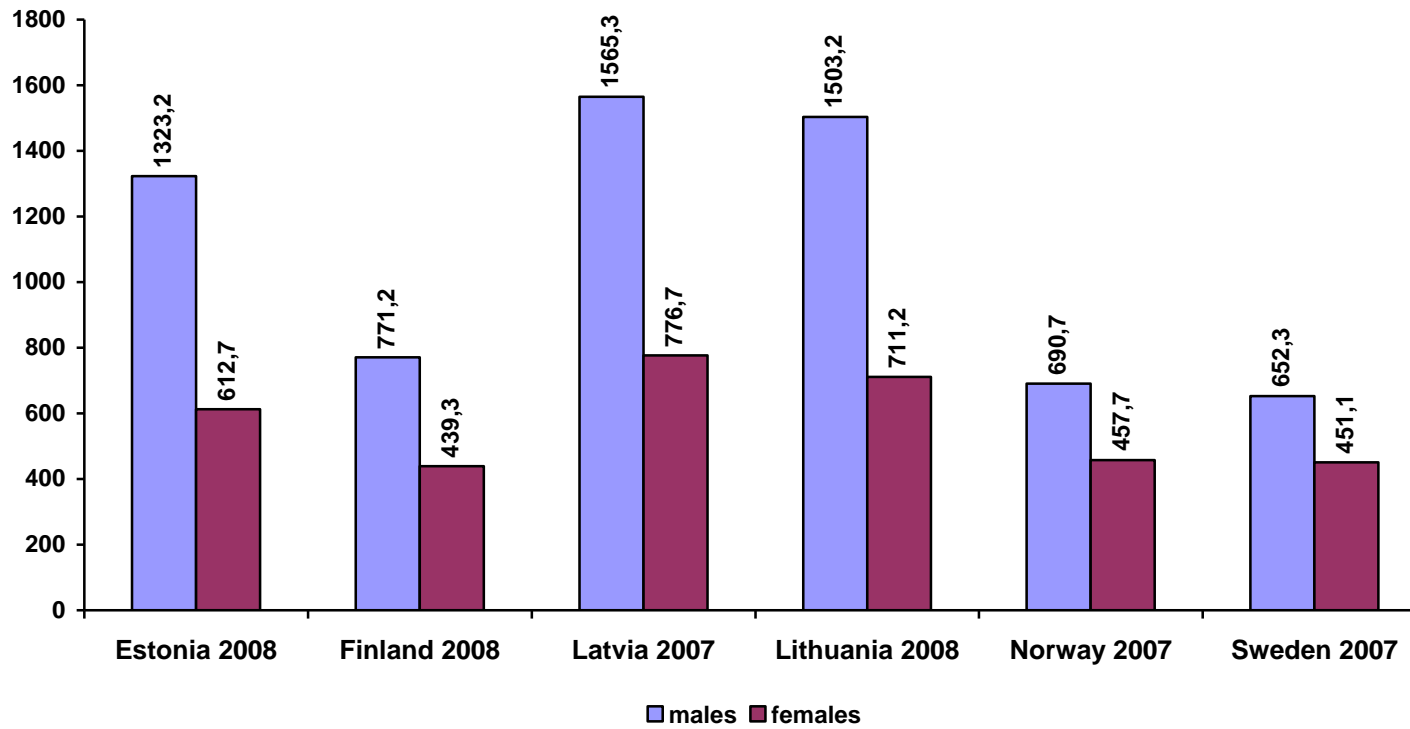


Females



## Health in the Baltic countries

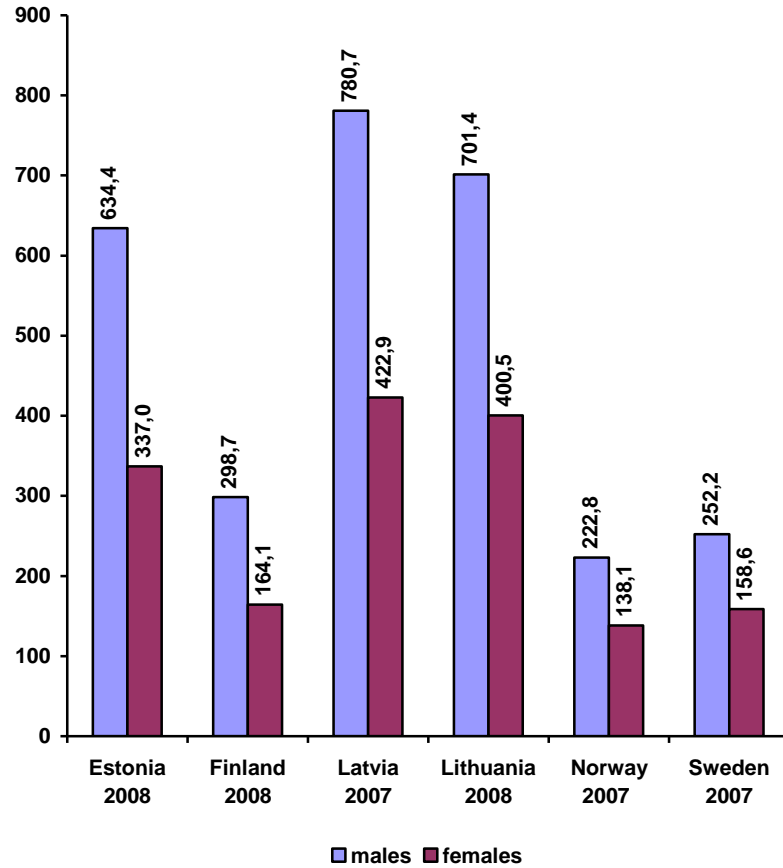
**Age-standardised death rates**  
(per 100,000 European standard population)



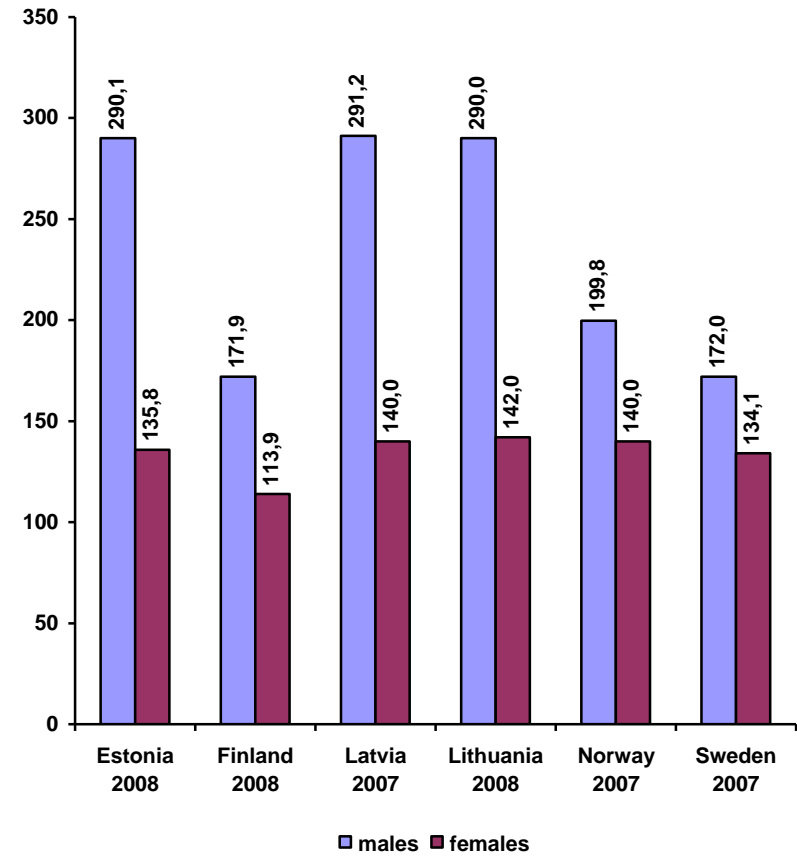
## Health in the Baltic countries

### Age-standardised death rates (per 100,000 European standard population)

diseases of circulatory system



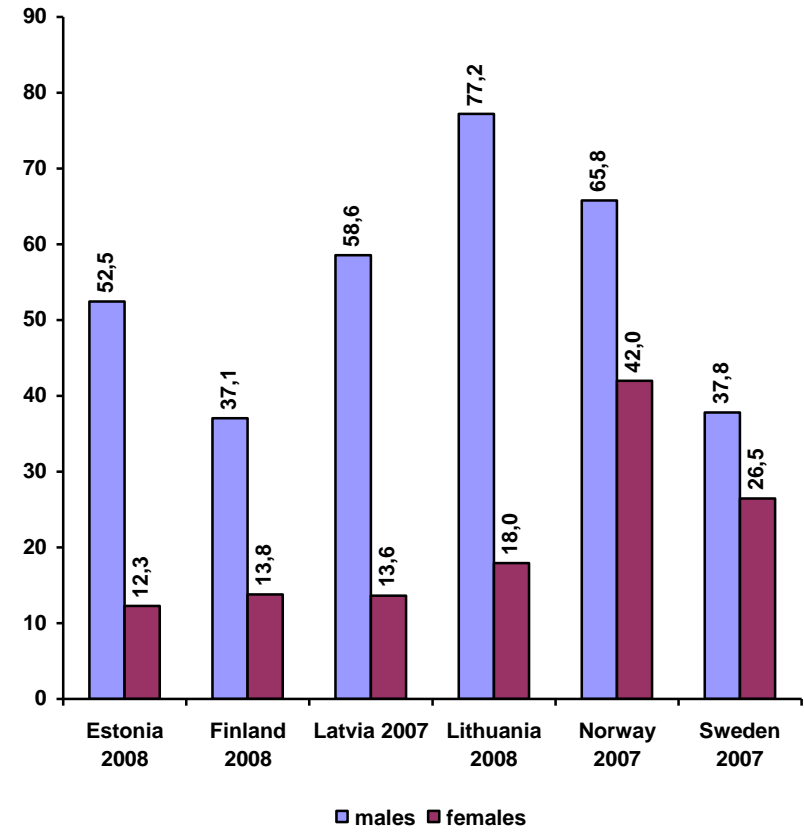
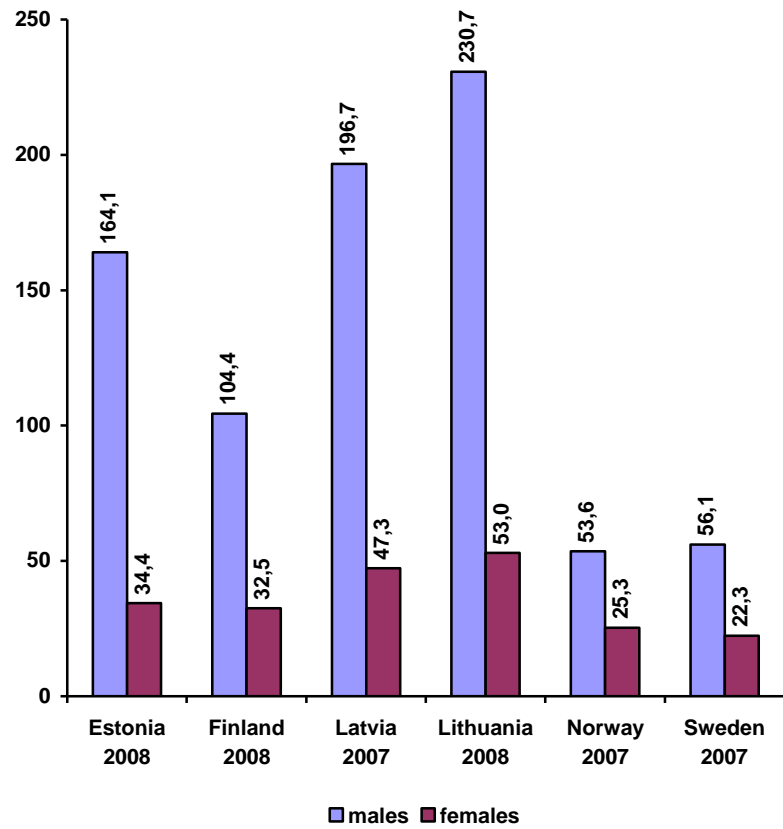
malignant neoplasms



**Age-standardised death rates**  
(per 100,000 European standard population)

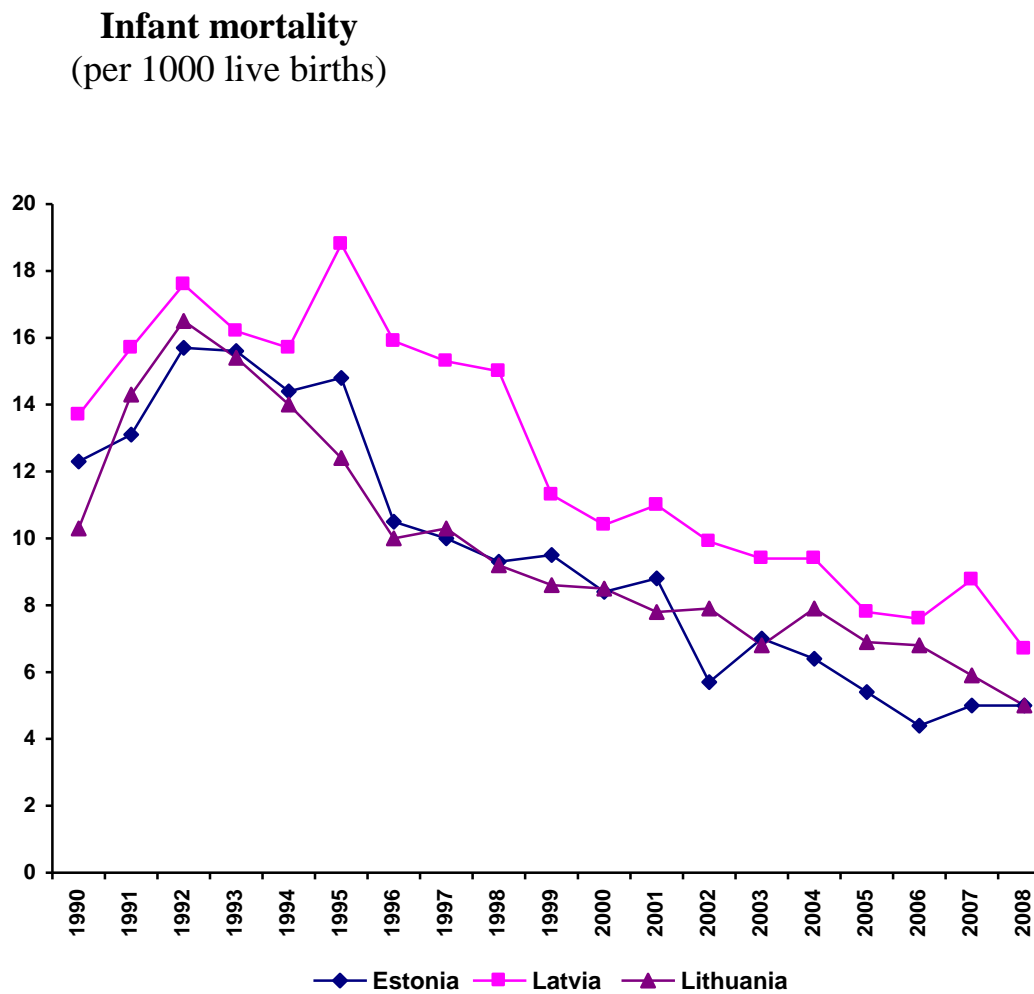
injuries, poisoning and other consequences of external causes

diseases of respiratory system



## Health in the Baltic countries

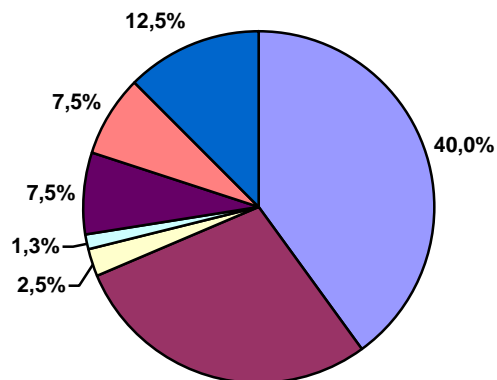
Years	Estonia	Latvia	Lithuania
1960	31.6	27.0	46.5
1965	20.3	18.6	35.4
1970	17.7	17.9	19.4
1975	18.2	20.3	19.6
1980	17.1	15.4	14.4
1985	14.1	13.0	14.2
1990	12.3	13.7	10.3
1991	13.1	15.7	14.3
1992	15.7	17.6	16.5
1993	15.6	16.2	15.4
1994	14.4	15.7	14.0
1995	14.8	18.8	12.4
1996	10.5	15.9	10.0
1997	10.0	15.3	10.3
1998	9.3	15.0	9.2
1999	9.5	11.3	8.6
2000	8.4	10.4	8.5
2001	8.8	11.0	7.8
2002	5.7	9.9	7.9
2003	7.0	9.4	6.8
2004	6.4	9.4	7.9
2005	5.4	7.8	6.9
2006	4.4	7.6	6.8
2007	5.0	8.8	5.9
2008	5.0	6.7	5.0





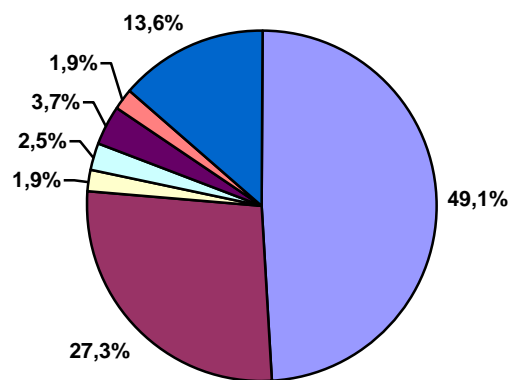
Structure of infant mortality (%) in 2008

Estonia



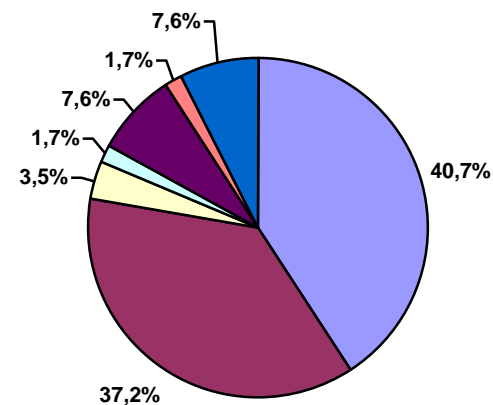
- Certain conditions originating in the perinatal period
- Congenital malformations
- Diseases of the respiratory system
- Infectious and parasitic diseases
- Injury, poisoning and other consequences of external causes
- Diseases of the nervous system and sense organs
- Other causes

Latvia



- Certain conditions originating in the perinatal period
- Congenital malformations
- Diseases of the respiratory system
- Infectious and parasitic diseases
- Injury, poisoning and other consequences of external causes
- Diseases of the nervous system and sense organs
- Other causes

Lithuania



- Certain conditions originating in the perinatal period
- Congenital malformations
- Diseases of the respiratory system
- Infectious and parasitic diseases
- Injury, poisoning and other consequences of external causes
- Diseases of the nervous system and sense organs
- Other causes

**Infant mortality by cause per 10,000 live births in 2008**

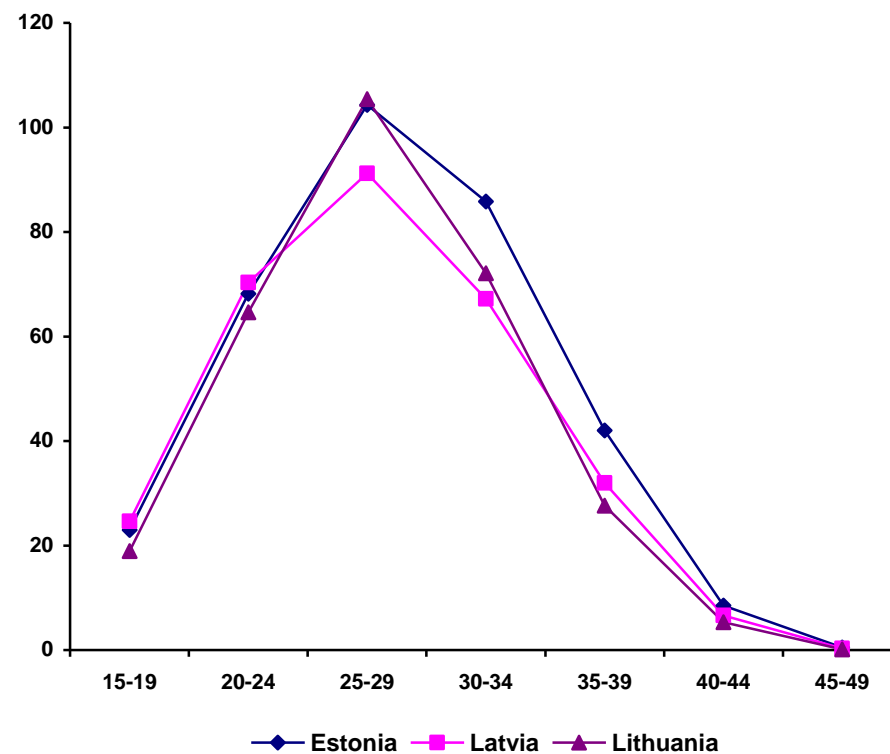
	Estonia		Latvia		Lithuania	
	Rate	%	Rate	%	Rate	%
Certain conditions originating in the perinatal period	20.0	40.0	33.0	49.1	20.2	40.7
Congenital malformations	14.3	28.8	18.4	27.3	18.5	37.2
Diseases of the respiratory system	1.2	2.5	1.3	1.9	1.7	3.5
Infectious and parasitic diseases	0.6	1.3	16.7	2.5	0.9	1.7
Injury, poisoning and other consequences of the external causes	3.7	7.5	2.5	3.7	3.8	7.6
Diseases of the nervous system and sensory organs	3.7	7.5	1.3	1.9	0.9	1.7
Diseases of the digestive system	0.0	0.0	0.4	0.6	0.0	0.0
Other causes	6.2	12.5	8.8	13.0	3.8	7.6
<b>TOTAL</b>	<b>49.9</b>	<b>100.0</b>	<b>67.2</b>	<b>100.0</b>	<b>49.8</b>	<b>100.0</b>

**Perinatal, neonatal and maternal mortality in 2008**

	Estonia	Latvia	Lithuania
Perinatal mortality per 1000 births	6.2	9.2	6.6
Stillbirth rate per 1000 births	4.0	6.2	4.7
Neonatal mortality per 1000 live births	3.2	4.7	2.9
Early neonatal mortality per 1000 live births	2.2	3.0	2.0
Maternal mortality per 100,000 live births	0.0	12.5	8.6
Standard perinatal mortality	4.3	6.3	4.7
Standard stillbirth rate	3.0	4.2	3.7

**Birth rates by age of mother in 2008**  
per 1000 females

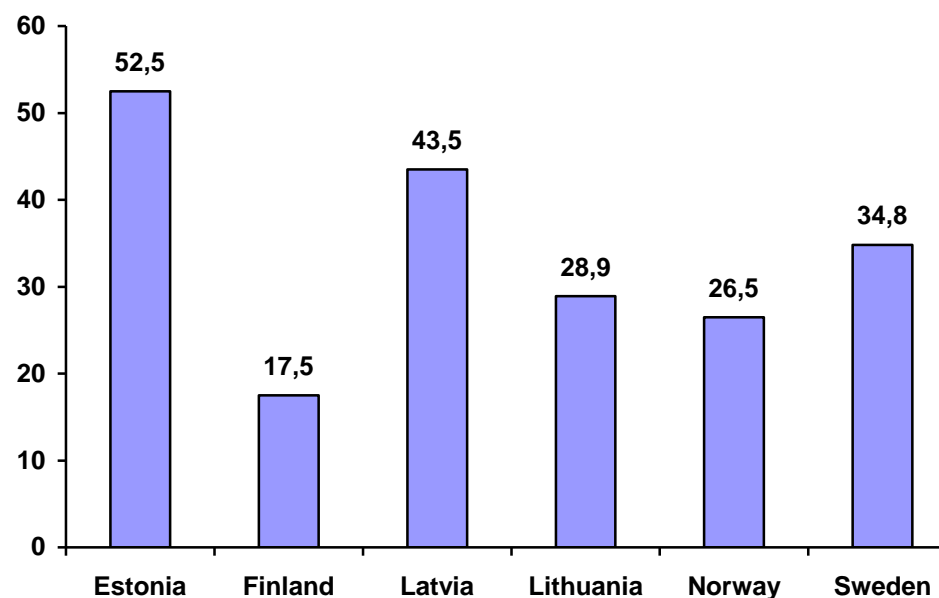
	<b>Estonia</b>	<b>Latvia</b>	<b>Lithuania</b>
Women aged 15-49	47.8	41.7	40.0
By specific age groups:			
15-19	23.0	24.6	18.9
20-24	68.2	70.3	64.6
25-29	104.3	91.2	105.4
30-34	85.8	67.2	72.1
35-39	42.0	32.0	27.6
40-44	8.5	6.6	5.3
45-49	0.5	0.3	0.1
<b>Total fertility rate</b>	<b>1.66</b>	<b>1.45</b>	<b>1.47</b>



**Abortions in 2008**

	<b>Estonia</b>	<b>Latvia</b>	<b>Lithuania</b>
<b>Total abortions</b>			
Total number	10719	14941	14212
Per 1000 women aged 15-49	31.9	25.8	16.2
Per 100 live births	66.8	62.3	45.4
<b>Induced abortions</b>			
Total number	8420	10425	9031
Per 1000 women aged 15-49	25.1	18.0	10.3
Per 100 live births	52.5	43.5	28.9
<b>Percentage</b>			
Spontaneous abortions	6.9	12.8	23.9
Legal abortions	76.2	68.4	62.5
Medical abortions	2.4	1.3	1.1
Other abortions	14.6	17.5	12.5

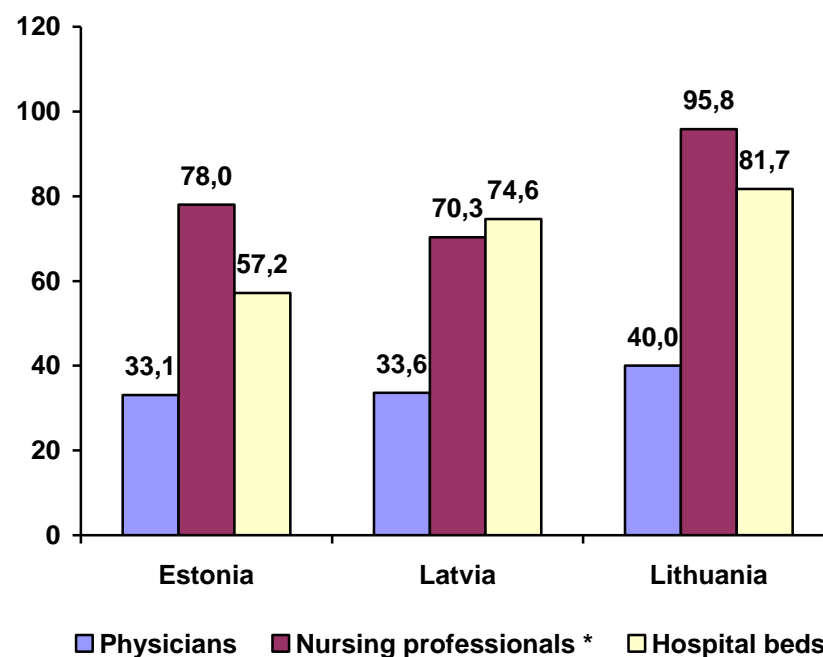
**Induced abortions per 100 live births in 2008**



**Health facilities in 2008**

	<b>Estonia</b>	<b>Latvia</b>	<b>Lithuania</b>
<b>Hospitals</b>	60	88	163
<b>Hospital beds:</b>			
Thousand	7.7	16.9	27.4
Per 10,000 population	57.2	74.6	81.7
<b>Physicians:</b>			
Thousand	4.4	7.6	13.4
Per 10,000 population	33.1	33.6	40.0
<b>Dentists:</b>			
Thousand	1.2	1.5	2.3
Per 10,000 population	8.8	6.5	6.8
<b>Nursing professionals*:</b>			
Thousand	10.4	15.9	32.1
Per 10,000 population	78.0	70.3	95.8
<b>Hospital admission:</b>			
Thousand	254.9	518.0	812.9
Per 100 population	19.0	22.9	24.2
<b>Physicians' visits:</b>			
Million	8.7	13.6	23.5
Per 1 inhabitant	6.5	6.0	7.0

**Physicians, nursing professionals\* and hospital beds per 10,000 population in 2008**



\* Including nurses, midwives, physician's assistants, specialist nurses and other personnel with special education in nursing

Physicians by speciality at the end of 2008

	Estonia ****		Latvia		Lithuania	
	Number	Per 10,000 population	Number	Per 10,000 population	Number	Per 10,000 population
TOTAL *	4444	33.1	7600	33.6	13403	40.0
Of them:						
Family doctors / general practitioners	829	6.2	1304	5.8	1822	5.4
Internal medicine **	528	3.9	779	3.4	2338	7.0
Surgery ***	391	2.9	659	2.9	1226	3.7
Paediatrics	231	1.7	378	1.7	1170	3.5
Gynaecology (including obstetrics)	268	2.0	443	2.0	744	2.2
Oncology	32	0.2	83	0.4	115	0.3
Otolaryngology	98	0.7	163	0.7	293	0.9
Ophthalmology	117	0.9	224	1.0	346	1.0
Anaesthesiology	272	2.0	366	1.6	664	2.0
Neurology	134	1.0	253	1.1	484	1.4
Psychiatry	189	1.4	255	1.1	554	1.7
Addiction specialists	-	-	75	0.3	24	0.1
Tuberculosis	-	-	126	0.6	25	0.1
Infectology	34	0.3	65	0.3	69	0.2
Epidemiology	-	-	68	0.3	103	0.3
Dermatology & venerology	76	0.6	131	0.6	182	0.5
Radiology	191	1.4	258	1.1	477	1.4
Pathology	54	0.4	44	0.2	67	0.2
Forensic medicine	-	-	49	0.2	58	0.2
Laboratory	118	0.9	208	0.9	94	0.3
Hygiene	-	-	56	0.2	177	0.5
Others	882	6.6	1613	7.1	2371	7.1
<p>* Number of dentists not included;</p> <p>** Includes specialists of therapeutics, cardiology, gastroenterology, allergology, endocrinology, haematology, nephrology, pulmonology, dietetics, rheumatology, geriatrics;</p> <p>***Includes surgeons, neurosurgeons, thoracic surgeons, cardiovascular surgeons, urologists, plastic surgeons, transplantologists, paediatric surgeons, traumatologists;</p> <p>**** In Estonia there are not separate specialists of tuberculosis, addictions and forensic medicine; the term of physicians does not include specialities of hygiene and epidemiology</p>						

**Hospital beds by speciality at the end of 2008**

	<b>Estonia</b>			<b>Latvia*</b>			<b>Lithuania</b>		
	Number of beds	Per 10000 population	%	Number of beds	Per 10000 population	%	Number of beds	Per 10000 population	%
<b>TOTAL</b>	7662	57.2	100.0	16907	74.6	100.0	27358	81.7	100.0
Internal medicine	1460	10.9	19.1	2865	12.6	16.9	4840	14.4	17.7
Rehabilitation	339	2.5	4.4	871	3.8	5.2	1290	3.9	4.7
Surgery (including orthopaedics)	1351	10.1	17.6	3399	15.0	20.1	4741	14.2	17.3
Oncology (including radiology)	132	1.0	1.7	773	3.4	4.6	707	2.1	2.6
Otolaryngology	70	0.5	0.9	176	0.8	1.0	309	0.9	1.1
Ophthalmology	27	0.2	0.4	172	0.8	1.0	305	0.9	1.1
Obstetrics	306	2.3	4.0	623	2.7	3.7	856	2.6	3.1
Gynaecology	203	1.5	2.6	593	2.6	3.5	794	2.4	2.9
Neurology	195	1.5	2.5	997	4.4	5.9	1652	4.9	6.0
Dermatology & venerology	56	0.4	0.7	110	0.5	0.7	120	0.4	0.4
Infectious	154	1.2	2.0	607	2.7	3.6	524	1.6	1.9
Tuberculosis	247	1.8	3.2	844	3.7	5.0	1267	3.8	4.6
Paediatrics	302	2.3	3.9	821	3.6	4.9	1386	4.1	5.1
Psychiatry	762	5.7	9.9	3119	13.8	18.4	3186	9.5	11.6
Narcology	-	-	-	387	1.7	2.3	267	0.8	1.0
General & nursing	1488	11.1	19.4	363	1.6	2.1	4400	13.1	16.1

\* Hospital beds average in 2008; excluding short-term social care beds

## Health in the Baltic countries

### Selected notifiable diseases per 100,000 population in 2008

	<b>Estonia</b>	<b>Latvia</b>	<b>Lithuania</b>
Typhoid fever and paratyphoid	0.0	0.0	0.03
Salmonella infections	48.3	56.6	94.1
Bacillary dysentery	5.1	4.5	2.4
Other intestinal infections	221.4	340.3	271.0
Diphtheria	0.0	1.3	0.1
Whooping cough	36.2	0.6	1.5
Meningococcal infection	0.5	0.6	2.0
Measles	0.0	0.1	0.03
Tick-borne viral encephalitis	6.7	8.1	6.6
Viral hepatitis, total	21.8	200.1	4.8
A	1.0	124.3	0.6
B	4.0	6.2	2.7
Acute upper respiratory infections	16141.4	n.a.	15407.5
Influenza	84.1	n.a.	540.6
<b>Malignant neoplasms</b>			
Incidence	497.2***	416.5	479.9
Prevalence	2776.6*	2676.5	1998.7 **
<b>Tuberculosis</b>			
Incidence (excluding relapses)	26.4	40.5	56.3
Prevalence	25.3	51.3	185.1
Syphilis	5.3	10.3	9.7
Gonorrhoea	10.9	21.5	15.9
AIDS	4.5	4.0	1.6
HIV carrier	40.7	15.8	2.8

n.a. – not available

\* data of 2003

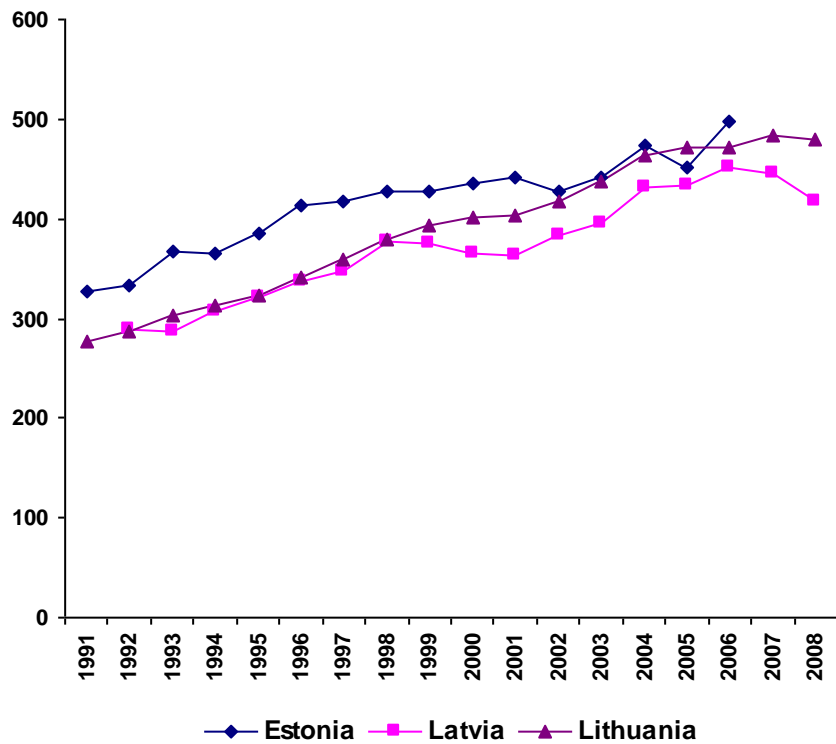
\*\* data of 2005

\*\*\* data of 2006

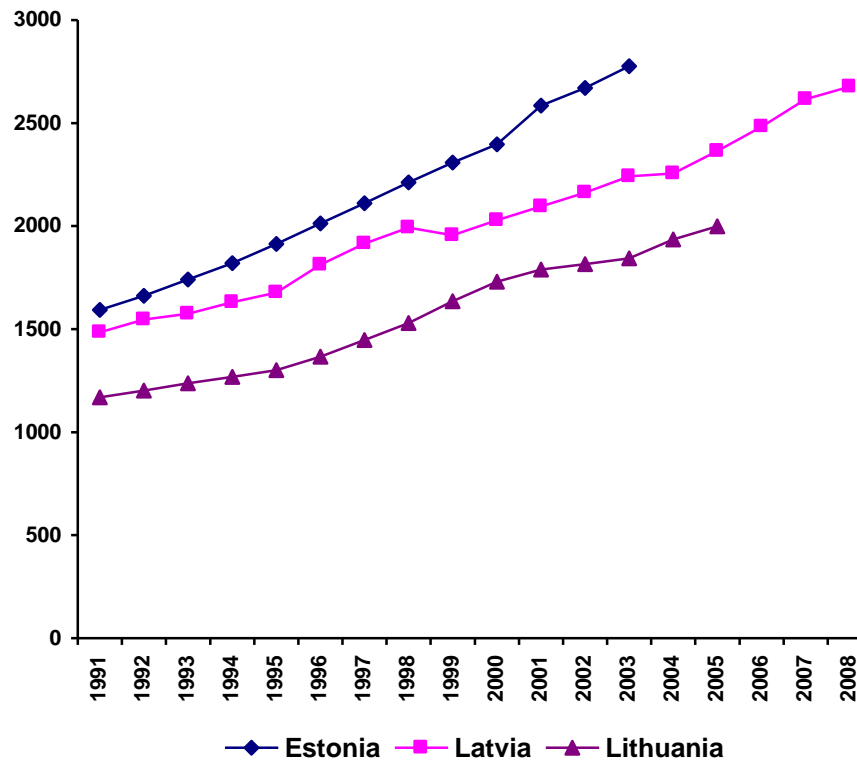


Malignant neoplasms  
(per 100,000 population)

incidence

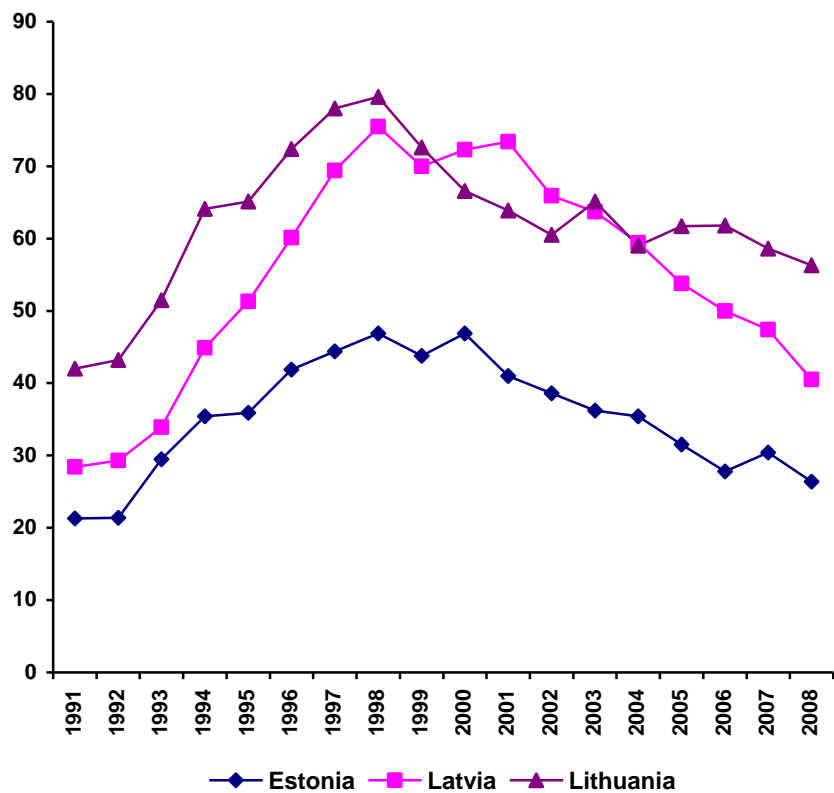


prevalence

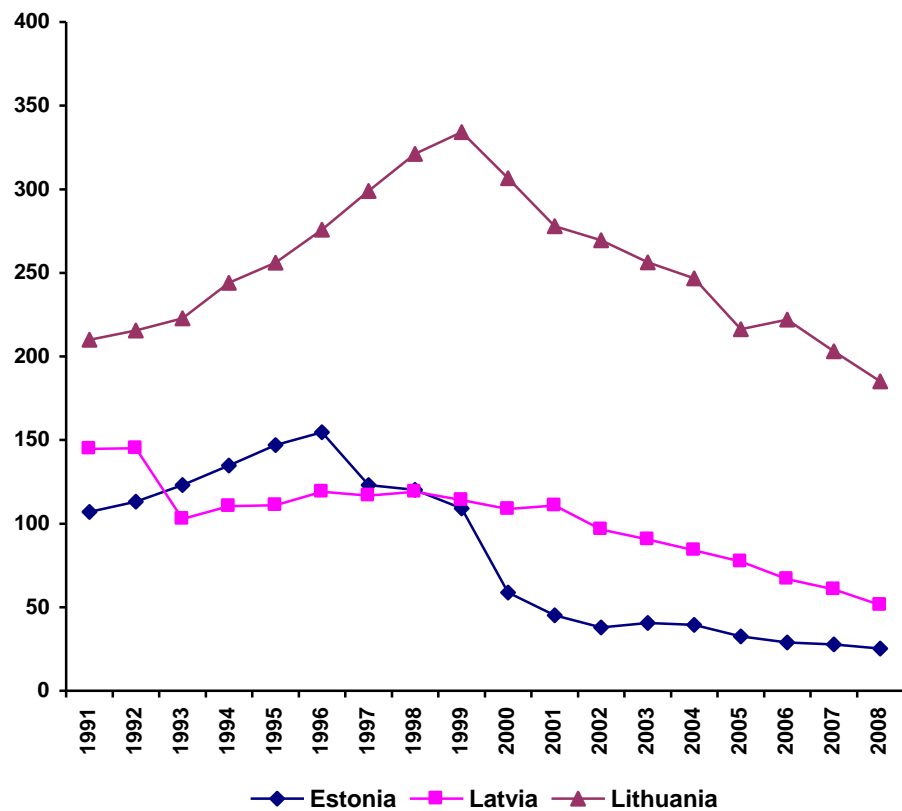


**Tuberculosis**  
(per 100,000 population)

incidence (excluding relapses)

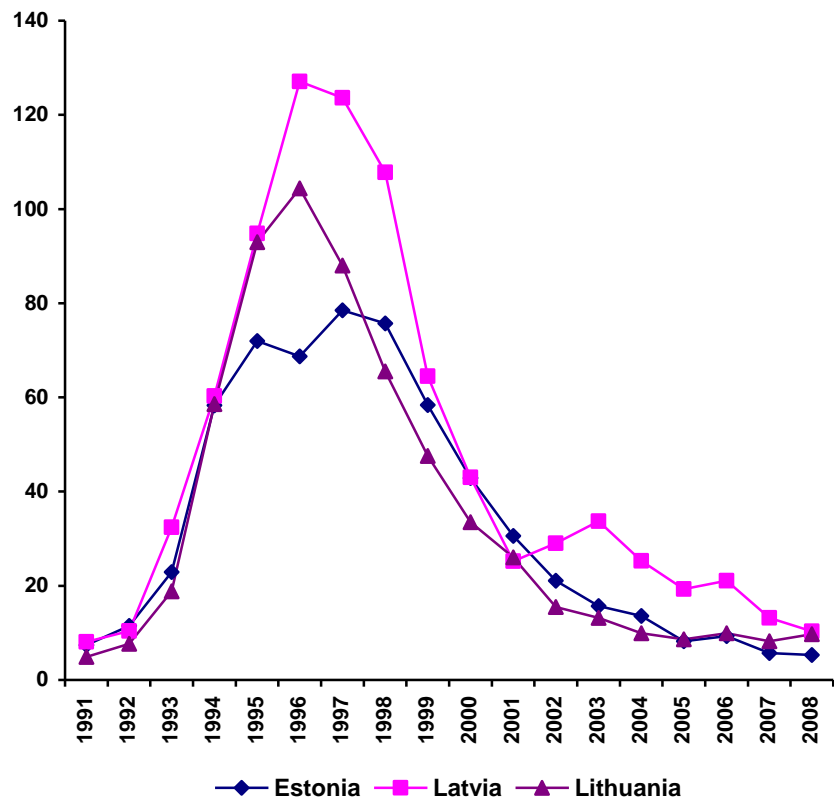


prevalence

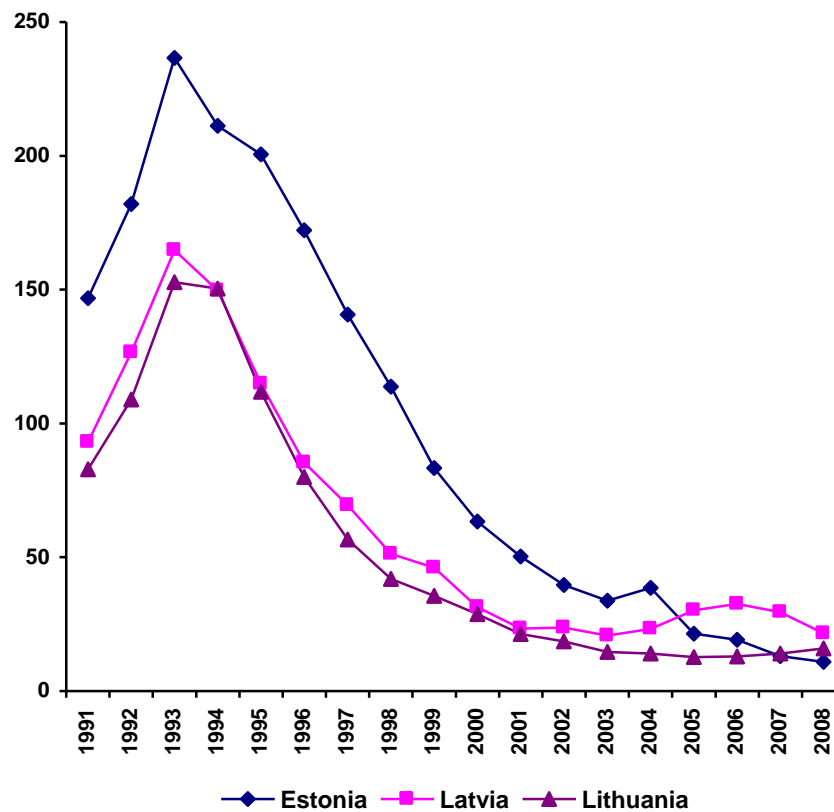


**Incidence of syphilis and gonorrhoea**  
(per 100,000 population)

syphilis



gonorrhoea

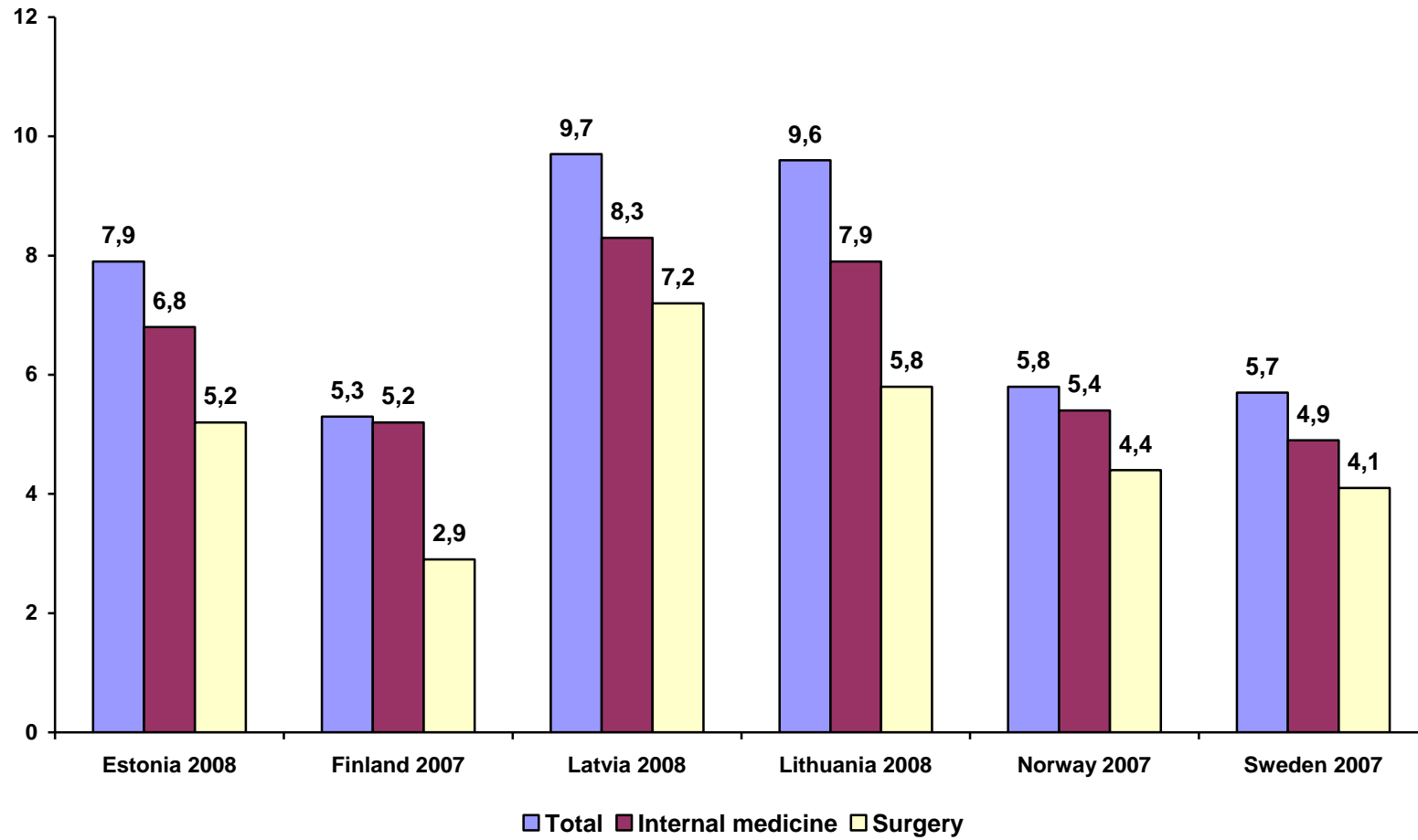


Hospital beds use by speciality in 2008

	Estonia					Latvia*					Lithuania				
	Admission per 1000 pop.	Bed occupancy		Average length of stay	Bed turnover	Admission per 1000 pop.	Bed occupancy		Average length of stay	Bed turnover	Admission per 1000 pop.	Bed occupancy		Average length of stay	Bed turnover
		Days	%				Days	%				Days	%		
TOTAL	190.1	272.1	74.3	7.9	34.6	228.6	290.4	79.6	9.7	30.7	242.1	284.9	78.1	9.6	29.7
Internal medicine	40.0	278.7	76.4	6.8	39.4	45.0	293.0	80.3	8.3	36.7	51.2	284.5	78.0	7.9	36.2
Rehabilitation	5.5	262.8	71.8	12.0	21.8	8.1	318.8	87.3	15.1	21.1	4.8	301.4	82.6	22.5	13.4
Surgery (including orthopaedics)	48.5	266.3	72.8	5.2	50.1	58.1	277.9	76.1	7.2	39.4	62.2	259.3	71.0	5.8	45.1
Oncology (include radiology)	3.0	298.9	81.9	7.4	39.1	9.9	279.5	76.6	9.8	29.0	6.7	293.3	80.4	9.1	32.2
Otolaryngology	8.8	277.5	75.8	1.6	172.3	4.1	263.9	72.3	5.0	52.8	5.8	246.4	67.5	3.9	63.2
Ophthalmology	1.4	168.6	46.1	2.5	67.7	4.2	245.4	67.2	4.5	54.6	7.1	233.3	63.9	3.0	78.5
Obstetrics	16.1	215.8	59.1	3.1	70.3	13.0	231.3	63.4	4.9	47.2	13.3	241.6	66.2	4.6	52.1
Gynaecology	10.6	193.2	52.8	2.8	69.9	17.2	251.3	68.9	3.8	65.9	14.8	203.0	55.6	3.2	63.2
Neurology	5.9	277.9	75.9	5.7	45.4	14.4	304.4	83.4	9.6	33.4	17.7	301.0	82.5	8.3	36.4
Dermatology & venerology	1.1	234.9	64.2	8.8	26.8	1.3	295.8	81.1	11.3	26.1	1.0	278.3	76.3	10.1	27.6
Infectious	5.2	249.0	68.0	5.9	42.3	12.2	274.5	75.2	6.1	45.5	7.2	249.3	68.3	5.0	49.9
Tuberculosis	0.7	262.8	71.8	63.2	4.0	3.0	275.7	75.5	34.0	8.4	1.6	309.0	84.7	68.5	4.5
Paediatrics	11.6	225.9	61.7	4.2	52.3	12.5	243.2	66.6	7.0	35.0	17.6	246.3	67.5	5.5	44.6
Psychiatry	10.7	330.5	90.3	16.7	19.7	8.0	337.5	92.5	58.7	5.9	9.2	293.2	80.3	29.1	10.1
Addiction treatment	-	-	-	-	-	8.9	292.6	80.2	5.6	52.3	2.2	312.8	85.7	11.2	27.9
General & nursing	10.7	306.8	83.8	27.1	11.1	4.1	250.7	68.7	11.2	25.5	9.0	342.9	93.9	48.0	7.1

\* Excluding short-term social care beds

Average length of stay (days) in the Baltic and Nordic countries



**Health in the Baltic countries**

**Discharges by groups of diseases in 2008**

	Estonia***				Latvia****				Lithuania			
	Children (0-14)		Adults (15 +)		Children (0-17)		Adults (18 +)		Children (0-17)		Adults (18 +)	
	discharges per 1000 pop.	average length of stay	discharges per 1000 pop.	average length of stay	discharges per 1000 pop.	average length of stay	discharges per 1000 pop.	average length of stay	discharges per 1000 pop.	average length of stay	discharges per 1000 pop.	average length of stay
Certain infectious and parasitic diseases	17.2	3.5	4.5	17.7	22.5	6.3	6.9	18.9	23.7	4.9	5.1	26.2
Neoplasms	4.7	3.2	19.7	8.6	2.8	10.8	22.5	9.1	4.4	6.2	25.6	8.7
Diseases of the blood and blood forming organs and certain disorders involving the immune mechanisms	1.4	4.1	1.2	8.6	0.9	6.6	0.9	8.2	0.9	4.9	1.3	7.5
Endocrine, nutritional and metabolic diseases	1.7	4.6	3.9	8.5	2.2	6.1	4.4	7.3	2.5	6.5	4.5	9.2
Mental and behavioural disorders	6.3	10.1	13.2	17.9	8.4	21.4	20.2	22.7	5.5	12.0	12.7	25.4
Diseases of the nervous system	6.6	6.6	5.5	9.1	9.7*	7.4*	13.2*	7.0*	6.5	6.0	14.5	9.7
Diseases of the eye and adnexa	0.7	1.8	1.3	3.0	-	-	-	-	3.1	4.8	7.5	2.8
Diseases of the ear and mastoid process	5.8	3.7	1.1	3.5	-	-	-	-	2.5	5.7	1.6	7.2
Diseases of the circulatory system	1.8	3.2	40.7	10.9	1.9	4.1	43.6	9.0	2.5	5.8	59.0	13.0
Diseases of the respiratory system	45.1	3.6	13.4	5.7	60.2	6.5	11.8	8.9	57.0	5.1	13.6	9.3
Diseases of the digestive system	10.2	2.9	17.1	5.5	20.3	4.0	18.7	6.6	17.7	3.9	19.4	6.9
Diseases of the skin and subcutaneous tissue	3.5	3.7	3.6	7.8	5.6	5.7	3.6	8.9	6.1	4.1	4.7	7.3
Diseases of the musculo-skeletal and connective tissue	2.9	4.1	13.5	7.1	5.5	12.6	19.5	10.0	4.2	6.0	13.3	8.5
Diseases of the genitourinary system	6.1	4.0	11.5	4.6	8.1	5.4	16.3	5.1	6.5	5.3	18.3	4.4
Pregnancy, childbirth and puerperium **	0.04	2.8	22.5	3.0	3.2	5.1	24.5	4.6	2.4	4.1	22.7	4.0
Certain conditions originating in perinatal period	19.1	7.3	X	X	14.5	7.9	X	X	18.9	6.5	X	X
Congenital malformations, deformations and chromosomal abnormalities	8.5	4.8	0.6	5.3	6.1	8.1	0.5	6.4	8.0	5.0	0.6	4.3
Symptoms, signs and abnormal clinical and laboratory findings, not elsewhere classified	4.9	2.4	1.2	4.1	0.9	3.5	0.2	5.3	7.5	19.1	1.6	3.7
Injury, poisoning and certain other consequences of external causes	11.9	3.1	12.0	9.8	20.9	4.6	20.5	8.1	18.9	4.1	19.1	9.7
Factors influencing health and contact with health services	3.6	4.0	1.6	8.4	-	-	-	-	7.5	3.9	1.8	7.2
<b>TOTAL</b>	<b>162.1</b>	<b>4.4</b>	<b>188.0</b>	<b>8.4</b>	<b>193.6</b>	<b>6.9</b>	<b>227.3</b>	<b>9.4</b>	<b>206.4</b>	<b>5.7</b>	<b>247.5</b>	<b>10.0</b>

\* Diseases of the nervous system and sensory organs

\*\* Per 1000 female population

\*\*\* Estonia – deceased and discharged , other countries – only discharged patients

\*\*\*\* Excluding short-term social care beds

Surgical operations in the hospitals in 2008

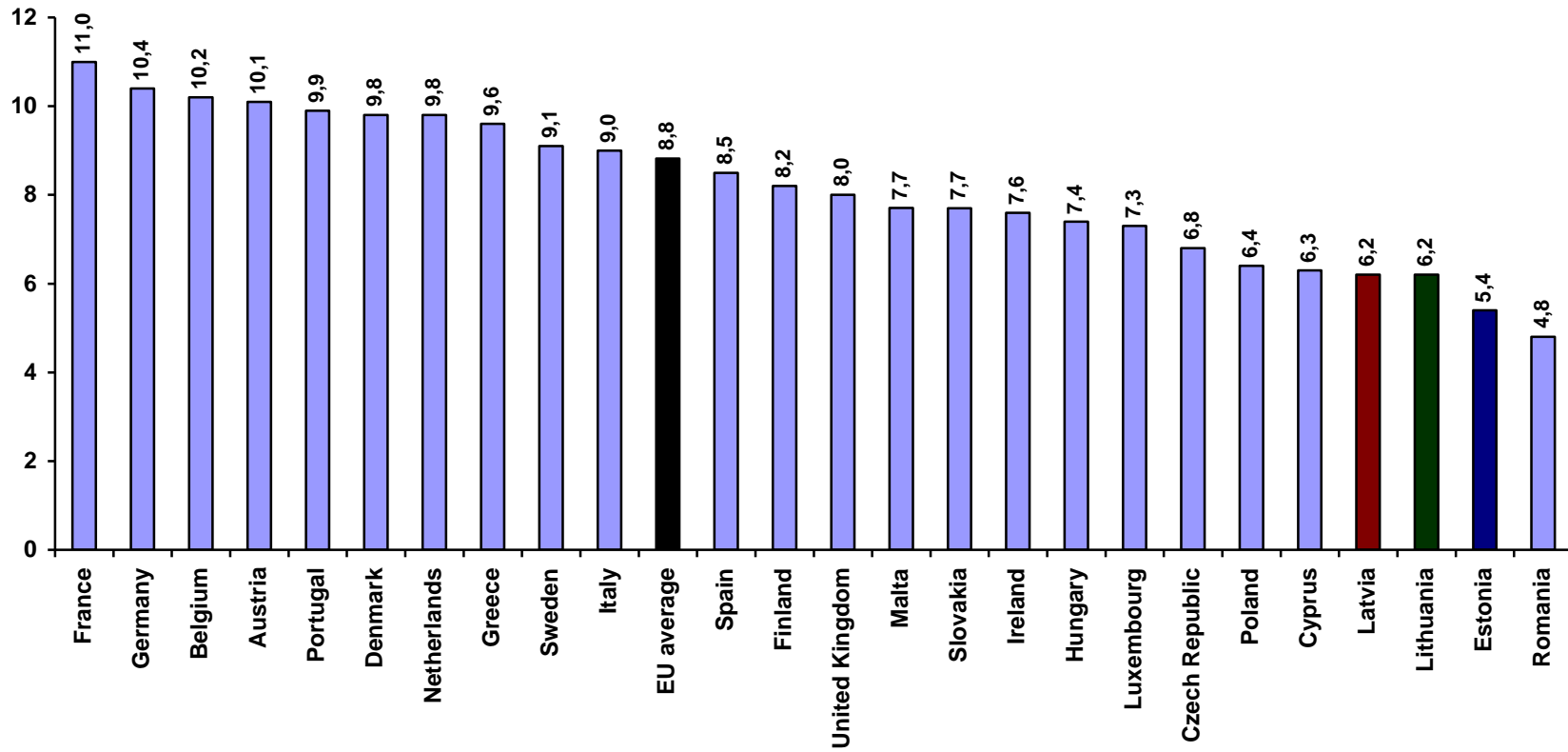
	Estonia			Latvia			Lithuania		
	Number	Per 100,000 population	%	Number	Per 100,000 population	%	Number	Per 100,000 population	%
TOTAL	87 998	6 563.7	100	170 974	7 544.9	100.0	294 254	8 762.5	100.0
On the nervous system	2 490	185.7	2.8	3 741	165.1	2.2	8 506	253.3	2.9
On the endocrine system	592	44.2	0.7	1 838	81.1	1.1	2 405	71.6	0.8
On the eye	1 785	1 33.1	2.0	7 357	324.7	4.3	21 322	634.9	7.2
On the ear, nose and throat	12 816	955.9	14.6	8 870	391.4	5.2	22 882	681.4	7.8
On the respiratory system	2 218	165.4	2.5	2 100	92.7	1.2	3 626	108.0	1.2
On the heart	4 097	305.6	4.7	11 326	499.8	6.6	2 635	78.5	0.9
On vessels	4 035	301.0	4.6	4 974	219.5	2.9	13 174	392.3	4.5
On the digestive system	12 646	943.3	14.4	19 477	859.5	11.4	41 161	1 225.7	14.0
On kidneys and the ureter	2 861	213.4	3.3	6 227*	274.8*	3.6*	7 998	238.2	2.7
On the prostate**	1 066	172.7	2.6	-	-	-	9 006	576.2	3.1
On female genital organs***	8 903	1 230.9	18.8	26 516	2 171.5	15.5	36 547	2 036.1	12.4
Obstetrical operations***	11 745	1 623.8	24.7	22 948	1 879.3	13.4	29 739	1 656.8	10.1
On the musculoskeletal system	14 699	1 096.4	16.7	31 221	1 377.7	18.3	27 491	818.6	9.3
On the breast	1 041	77.6	1.2	2 424	106.9	1.4	3 420	101.8	1.2
On the skin and subcutaneous tissue	5 821	434.2	6.6	14 495	639.7	8.5	31 162	928.0	10.6
Other procedures	1 183	88.2	1.3	7 460	329.2	4.4	33 180	988.1	11.3

\*) Data for Latvia - including operations on prostate

\*\* ) Per 100,000 male population

\*\*\* ) Per 100,000 female population

Total health care expenditure as % of GDP in EU member states



Note: data for Estonia, Latvia and Lithuania – 2007; other countries 2005 - 2008  
 Estonia and Lithuania – calculated using the SHA (OECD)



### Obstetric Definitions

Live birth -	A foetus that after complete expulsion or extraction from its mother breathes or shows any other evidence of life, irrespective of the duration of the pregnancy.		standard rate is used for international comparison including births with a weight of 1000 g or more.
Still birth -	Death prior to the complete expulsion or extraction from its mother of a product of conception after 22 weeks of gestation. The standard rate is used for international comparison including births with a weight of 1000 g or more.	Maternal death -	The death of a woman while pregnant or within 42 days after termination of pregnancy, irrespective of the duration and the site of the pregnancy, from any cause related to or aggravated by the pregnancy or its management, but not from accidental or incidental causes.
Infant death -	A live-born infant who dies during the first year of life.	Abortion -	Spontaneous or induced (legal, therapeutic, criminal) abortion is the termination of pregnancy or artificial extraction of the product of the conception during the first 22 weeks of gestation.
Neonatal death -	Death occurring at the age of 0 to 27 full days of life (27 days 23 hours 59 min.). The first day of life is considered as day zero.		
Early neonatal death -	Death occurring at the age of 0 to 6 full days of life (6 days 23 hours 59 min.). The first day of life is considered as day zero.	Still birth rate -	The average number of children that would be born per woman if all women lived to the end of their childbearing years and bore children according to a given set of age-specific fertility rates.
Perinatal death -	Foetal deaths and live-born infants who die at the age of 0 to 6 full days of life. The		

## Sources

1. Statistical Yearbook of Estonia 2009; Statistics Estonia. Tallinn, 2009
2. Statistical database on the website of Statistical Office of Estonia: <http://www.stat.ee>
3. Statistical data on the website of National Institute for Health Development: <http://www.tai.ee>
4. Databases of Central Statistical Bureau of Latvia
5. Branch statistical overviews and databases of The Centre of Health Economics of Latvia
6. Statistical Yearbook of Lithuania 2008; Department of Statistics to the Government of the Republic of Lithuania; Vilnius, 2009
7. Demographic Yearbook 2008; Department of Statistics to the Government of the Republic of Lithuania; Vilnius, 2009
8. Health Statistics of Lithuania 2008; Health Information Centre, Institute of Hygiene; Vilnius, 2009
9. Health for All database, WHO Regional Office for Europe
10. Health Statistics in the Nordic Countries 2007; NOMESCO, Copenhagen 2009

### Further information:

National Institute for Health Development,  
Hiiu 42, 11619 Tallinn, Estonia  
Phone: 372-6593 900,  
Fax: 372-6593 901,  
E-mail: [tai@tai.ee](mailto:tai@tai.ee)  
Website: <http://www.tai.ee>  
M.Jesse, director

The Centre of Health Economics,  
Dunties 12/22, Riga LV 1005, Latvia  
Phone: 371-67501590  
Fax: 371-67501591  
E-mail: [info@vec.gov.lv](mailto:info@vec.gov.lv)  
Website: <http://www.vec.gov.lv>  
D. Behmane, director

Health Information Centre, Institute of Hygiene  
Kalvariju 153, LT 08221, Vilnius, Lithuania  
Phone: 370-5-2773301  
Fax: 370-5-2773302  
E-mail: [lsic@lsic.lt](mailto:lsic@lsic.lt)  
Website: <http://www.lsic.lt>, <http://www.hi.lt>  
Dr. R. Gurevicius, Head of Health Information Centre

---

### Health in the Baltic Countries 2008

---

#### Editorial board:

National Institute for Health Development of Estonia:  
K.Karelson, Dr. M. Rätsep, M. Ruuge

The Centre of Health Economics of Latvia:  
J.Misins, D.Mihalovska

Health Information Centre of Lithuania, Institute of Hygiene:  
R.Gaidelyte, M.Garbuviene, N.Madeikyte